

Name _____

Virtual Annelid Exploration

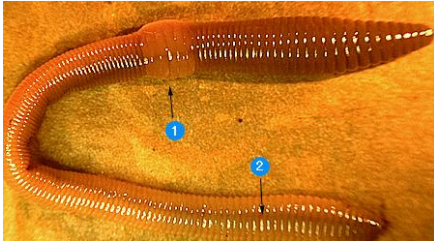
Follow all of the instructions carefully. Answer the questions in the packet IN ORDER.

Go to my website: amosfc.wikispaces.com

- Click on 7th Grade Science (*left hand side of screen*)
- Click on Helpful Websites (*last link on that page*)
- You will use the 3 links under Annelids to complete your packet (for Parts A-C)

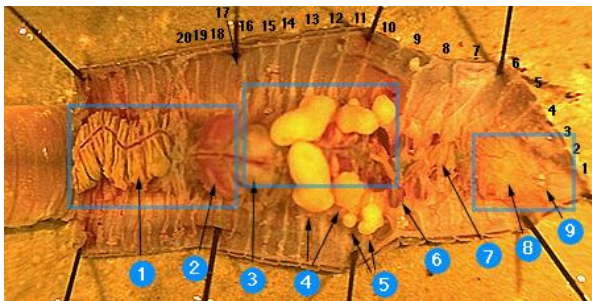
A. Click on “Earthworm Review” and click on each of the pictures shown below. Then click on the blue circled numbers, and the structure will be identified in bold.

Click on the first worm picture (external, dorsal surface).



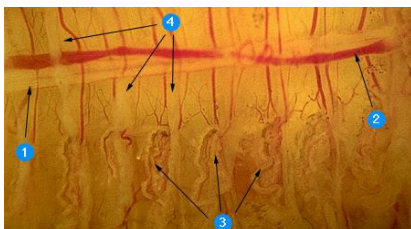
1. What is #1 pointing to? _____
2. What is its purpose? _____
3. What is #2 pointing to? _____

Click on the previous page button. Now click on the picture of internal morphology (overview).



4. What is #1 pointing to? _____
5. What is #2 pointing to? _____
6. What is #3 pointing to? _____
7. What is #6 pointing to? _____
8. Worms have _____ pairs of these “hearts.”
9. #9 is pointing to the suprapharyngeal ganglia, which is also known as what? _____

*Click on the previous button page. Now click on the picture of the internal morphology (w/o digestive system). Click in the **blue box** for a close up.*



10. What is #1 pointing to? _____
11. What is #2 pointing to? _____
12. What is #3 pointing to? _____

B. Now go back to my website (see directions in box on first page) and click on “Discovery Kids: Worm World.”

Click on “Anatomy of an Earthworm” to answer the following questions.

13. There are _____ species of worms and _____ different kinds of earthworms.

14. Name the 7 body parts through which a leaf travels as a worm eats it in order:

1. _____
2. _____
3. _____
4. _____

5. _____
6. _____
7. _____

Now scroll down until you see links under “Related” and click where it says “The Earthworm.”

15. Earthworms have been around for _____ years.

16. Earthworms in South America can grow up to _____ long and weight over a _____.

17. Summarize (in your own words!) at least 3 ways these “underground farmers” help the soil.

- _____
- _____
- _____

Now scroll down until you see links under “More-Tell Me” and click the orange box that says “Worm World.”

Explore the pages about Nightcrawlers, Leeches, and Bearded Worms. Using the information you discovered, write at least 1 fact you learned about each of these other annelids using complete sentences.

18. Nightcrawlers

- _____

19. Leeches

- _____

20. Bearded Worms

- _____

C. Now go back to my website (see directions in box on first page) and click on “Virtual Lab: Earthworm Dissection.”

AFTER Parts A and B of your lab are finished, explore this virtual lab. Procedures for using the site can be found on the left hand side of your screen as you scroll down. See how well you know the external and internal anatomy of an earthworm by trying to label each part. You do NOT have to complete the journal questions.

